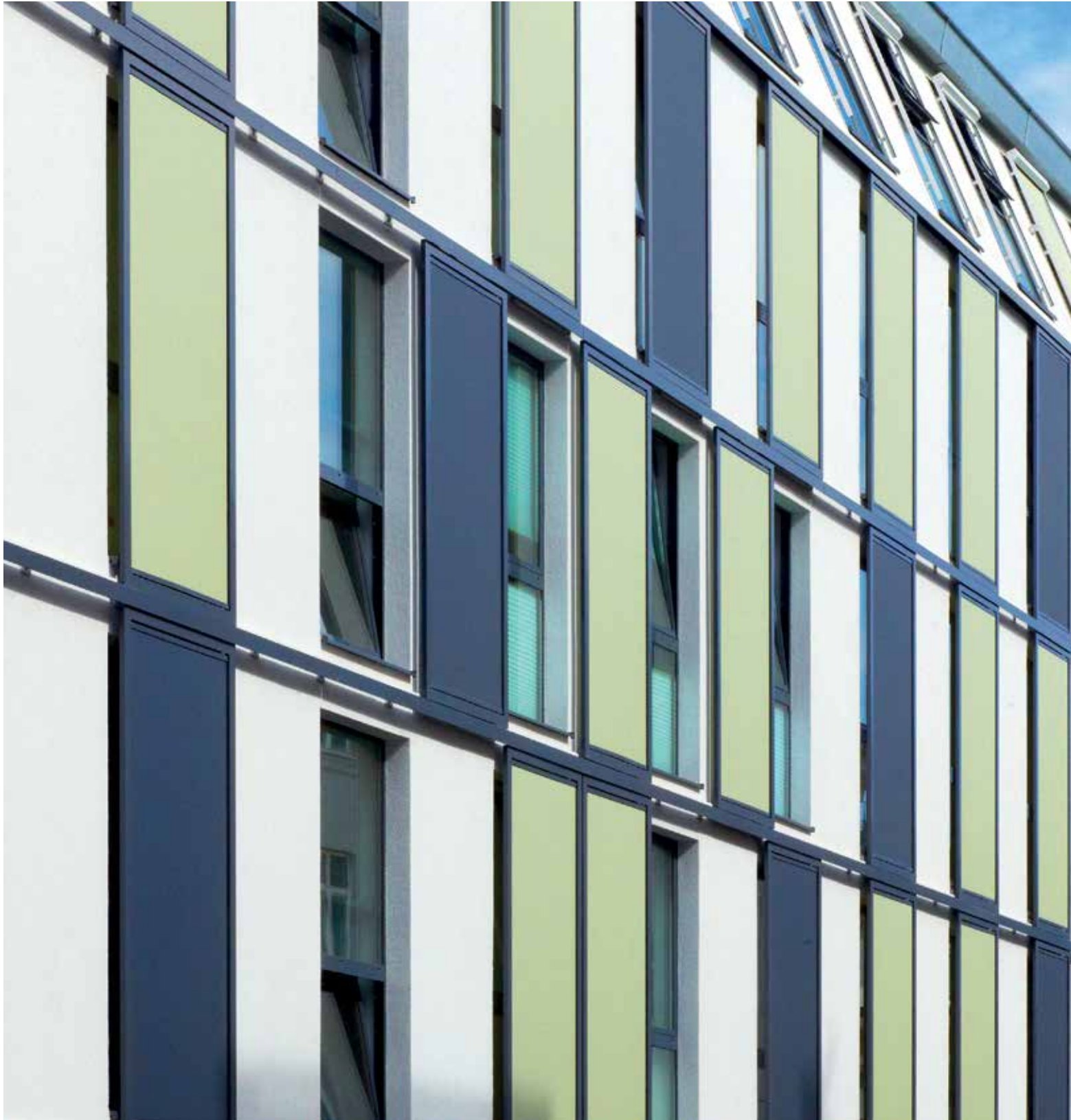


Window shutters from Griesser.
Sliding shutters





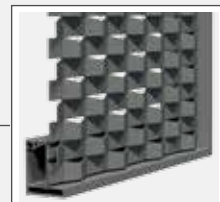
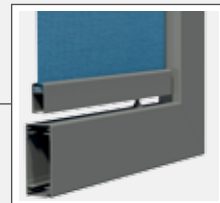
Sliding shutters

Well-designed technology and perfect finishing play an important role in sliding shutters. With their very aesthetic design, the Griesser sliding shutters are trendy and suit more than contemporary architecture. The sliding shutters can be seamlessly integrated into the facade design as an elegant detail. Our program is distinguished not only by our standard models, with their many combination options, but also our many special versions. Technical solutions and the associated comfort are carried out by Griesser in a customized way.





Cam

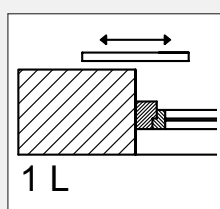


Various fillings possible

Product highlights sliding shutter

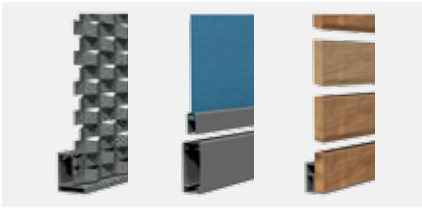


Burglary-resistant



Various sash placements

PRODUCT ADVANTAGES IN DETAIL



Various fillings possible

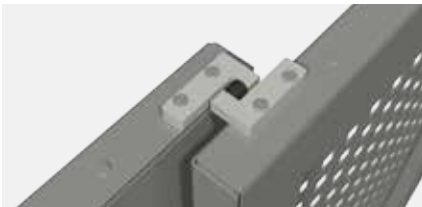
The comprehensive selection of window roller shutter models was specially developed by Giesser for use as sliding shutters. Select for this purpose your personally preferred filling and give your building that certain something with the wood, fabric, grille or metal plate filling.

Giesser scores points with its sliding shutters, not only with the standard models and their numerous combinations but also for special solutions.



Burglary-resistant

Products from Griesser offer both mechanical and electronic safety systems in order to meet the increasing security needs of the residents and the safety requirements of the insurance companies.



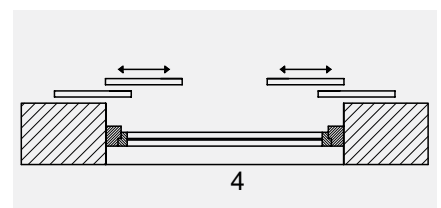
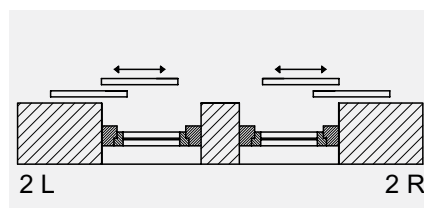
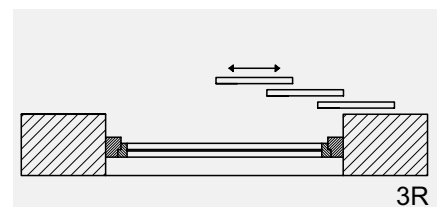
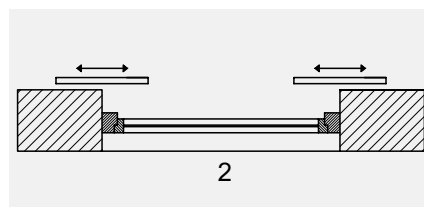
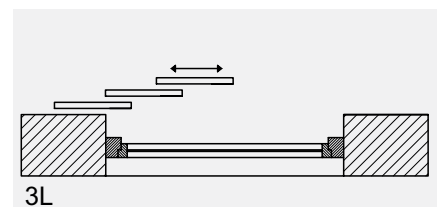
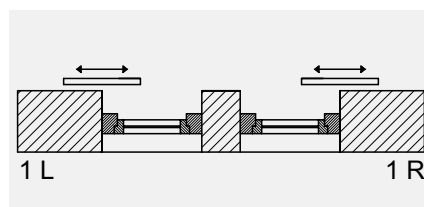
Operating multiple panels

The panels can be moved individually or using a cam.

It is also possible to use timing belts and a motor to create a telescopic movement, either counter-wise or in the same direction.

Various sash placements possible

The sashes can be arranged in a variety of sequences, depending on the space situation or personal taste. We find the optimum solution for you.







Fixed slats

Model A

The traditional

Model A consists of high-quality extruded aluminium profiles. This model variation is used in the most varied building designs.



Frame profile:	71 x 33 mm
SLIM:	40 x 33 mm
Lamella profile: with 2 intermediate struts for reinforcement	50 x 10 mm

Model T

The modern version with lightproof lamella

Model T catches the eye with its opaque design, while at the same time the slats are uniform in appearance inside and out. This model is also often used as separating element in the balcony area.



Frame profile:	71 x 33 mm
Lamella profile: with intermediate struts	50 x 18 mm

Model R

Shutters with the modern rhomboid lamella

Model R consists of high-quality extruded aluminium profiles. Innovative façade optics can be realised with this product solution thanks to various installation variants.



Frame profile:	71 x 33 mm
Lamella profile: with 2 intermediate struts for reinforcement	60 x 6 mm

Model H Alu

Aluminium frame with rhomboid aluminium lamella

The frame of the Model H Alu is manufactured from high-quality extruded aluminium profiles. The frame dimension (45x55 mm) used enables designs with considerably larger elements. The aluminium slats are screwed onto the frame from behind using U-profiles; horizontal or vertical versions are also possible.

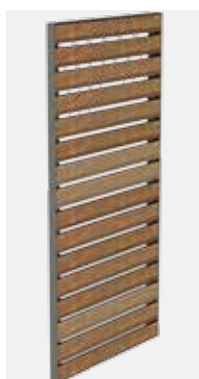


Frame profile:	55 x 45 mm
SLIM:	42 x 31 mm
Lamella profile:	60 x 15 mm
SLIM:	35 x 15 mm

Model H Wood

Aluminium frame with wooden lamella

The frame consists of extruded aluminium profiles that are joined with corner angles. The wooden slat consisting of untreated larch is invisibly screwed to the frame with a clip profile. The design of this profile also allows the realisation of large panel designs. The frame can be coated in all colors – a nice contrast with the wooden slat.



Frame profile:	55 x 45 mm
SLIM:	42 x 31 mm
Lamella profile:	
Wooden lamella made of Siberian larch, untreated	60 x 15 mm

Flexible slats

Model B

The variable version with flexible lamella

The special feature of Model B is the locking option for the slat profiles. Besides the horizontal adjustment of the shutter, the solar irradiation is controlled as well. The slat profiles can be moved with an adjustment lever. By default, the adjustment levers are always installed at half height and towards the centre of the window element.



Frame profile:	71 x 33 mm
Lamella profile:	50 x 10 mm

Fillings, covers

Model Soltis

Aluminium frame with fabric cover by Soltis

The appeal of Model Soltis is its almost frameless appearance. The fabric cover (Soltis 86 or Soltis 92) is fixed in the frame with a keder profile and clamp screws. The compound structure of the Soltis fabric makes it highly resistant against climate and weather influences. The frame is available in all colors.



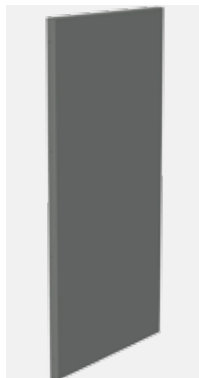
Frame profile:	71 x 33 mm
SLIM:	55 x 45 mm
Cover:	Soltis fabric (polyester, PVC) 92 or 86 from the Griesser Soltis Collection



Model S

The sliding shutter

Model S consists of an extruded profile frame and a 2mm aluminium sheet. The aluminium sheet is bevelled and riveted on the top, bottom and sides. This results in a plane surface with the rivets not visible.

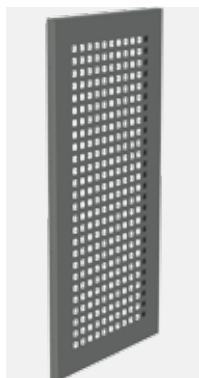


Frame profile:	SYS 70 x 30 mm
SLIM:	40 x 31 mm
Sheet:	2 mm aluminium sheet, solid, bevelled and riveted on the top, bottom and sides

Model SL

The sliding shutter with perforation

Model S consists of an extruded profile frame and a perforated 2mm aluminium sheet. The aluminium sheet is bevelled and riveted on the top, bottom and sides. This results in a plane surface with the rivets not visible that can be varied with different perforation patterns. Besides standard perforations (rectangular or round perforations), individual perforation patterns can also be realised.

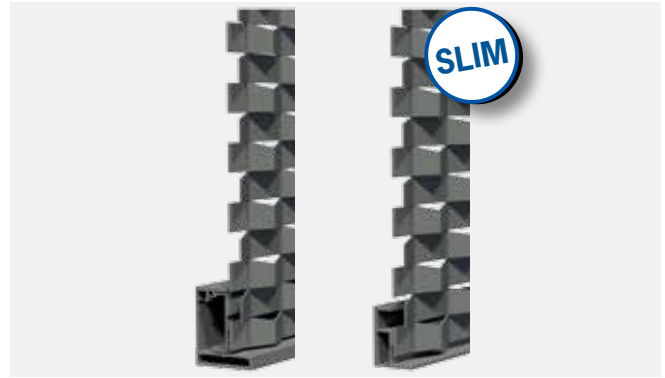


Frame profile:	SYS 70 x 30 mm
SLIM:	40 x 31 mm
Sheet:	2 mm aluminium sheet, bevelled and riveted on the top, bottom and sides
Standard perforations:	Q 20 x 20, Q 35 x 35, RU 20 and RU 30 mm
	distance between hole edges ≥ 20 mm

Model Sentum

Aluminium frame with extruded metal

Model Sentum consists of an extruded profile frame with a SLIM surface and riveted in extruded metal. The aluminium sheet is riveted on circumferentially on the surface. The modern extruded metal profile provides shade but still allows light into the building.



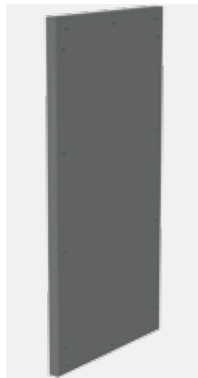
Frame profile: 55 x 45 mm
 SLIM: 42 x 31 mm
 Filling: 2 mm extruded aluminium metal, riveted to the frame on the surface side
 Mesh according to choice (optional)

Model Platina

Aluminium frame with Fundermax Panel

Model Platina consists of an extruded profile frame and a Fundermax Uni-Decor panel. This model ideally complements modern façade designs and also allows largely dimensioned sliding shutter constructions through mullions and transoms.

Contrary to the SLIM design, a frame is not visible from the front.



Frame profile: 71 x 33 mm
 SLIM: 42 x 31 mm
 Filling: Max. exterior NT both sides
 Thickness: 8 mm
 Core: F quality, brown
 Flammable class: B

Color and accent

0070 NT carbonite	0085 NT white
0074 NT pastel gray	0689 NT deep red
0075 NT dark red	0161 NT natural afro
0077 NT graphite	AUTN





CONTROL – AUTOMATICALLY GOOD.

Griesser offers highly functional solutions for the automation of sliding casements that combine convenience and reliability and that clearly support the company's claim to be the innovation leader in window casements. Single elements or entire groups can also be moved via button, bus control or even remote control. Coupled to a house bus, programming or wireless control can now also be used for opening.

COLORS

The colors of our window roller shutters should reflect your wishes, lend distinction to the character of the architecture and create a personal atmosphere. These wishes are a daily challenge to our developers, planners and coaters.

Powder coating

The powder coating of aluminum has proven to be an environmentally friendly, cost-appropriate and long-lasting alternative to lacquering. It is resistant to both impacts and weather.

RAL, NCS, VSR and Metallic colors as well as wood decor

The wide color spectrum from Griesser leaves nothing to be desired. Select your desired color from our two standard color collections GriColors and GriRal Colors and lend your building an individual note.

Surfaces Variety for every purpose

With the aid of a special coating process, Griesser window roller shutters can be produced in a variety of surface appearances such as smooth and finely structured. The surface structure provides the color or the decor once again with a new appearance.

Wood materials, facade plates and textiles

In addition to the colors, a variety of structures is also possible. The unique feature here is the wood decor: It convinces not only by its astoundingly true-to-nature appearance, but also by its convincing weather resistance.

Special combinations of materials also contribute to the great variety of Griesser window roller shutters. From individually printable fabric covers made of Soltis textile to slat versions made of natural wood, Plexiglas or Fundermax – there are practically no limits to fulfilling customer preferences.



SURFACE STRUCTURE GRICOLORS

Semi-gloss



SURFACE STRUCTURE GRIRAL COLORS

Semi-gloss

Fine structure-matte







Your partner:

Griesser solar shading – Quality since 1882.
www.griessergroup.com

