

Collection Cromie.
The automatic choice.





Collection Cromie

The Collection Cromie is a functional interpretation in favor of esthetics: The technical properties of acrylic fibers with mass coloration are freshened up with minimalist patterns and colors, thus allowing them to fit in with the architectural structures, facade materials and ambience of the surroundings. They withstand all climatic conditions and atmospheric influences as well as UV radiation and the most aggressive forms of environmental pollution. The Collection Cromie is available in three color schemes:



URBAN STYLE

Simple and elegant in color and form. The look of Urban Style is reminiscent of the flair of a pulsating city.



COUNTRY STYLE

Country Style reproduces the concentrated appeal of a romantic rural setting in a uniquely esthetic way.



SEA SIDE

Sea Side enriches the collection with a Mediterranean touch: summery, clear colors, reminiscent of rocky cliffs, seawater and the sun.

ACRYLIC TECHNOLOGY

Griesser acrylic fabrics have been in use for generations. Having been on the market for over 40 years, they convince thanks to their extraordinary durability and long-lasting color brilliance. The color pigment is stored in each individual fiber during the creation of the basic acrylic material. The result is especially high color brilliance and great UV resistance. This dyeing of the basic material makes Griesser fabrics superior to the products of other manufacturers, in which only the finished threads are dyed. The basic acrylic material consists of many small fibers, which become entangled with each other to create a wadded source material. This basic material later ensures particularly pleasant haptic textile qualities in the woven fabric. The wad is subsequently spun: during the spinning process the individual fibers are gradually aligned to be increasingly straight until they lie close to each other and are brought together as a single thread. The advantage of Griesser acrylic fabric: Thanks to the vertical production process – from spinning, weaving and equipment to the finished fabric – product optimizations and innovations can be implemented faster.



Urban Style

980/2



977/926



979/1



969



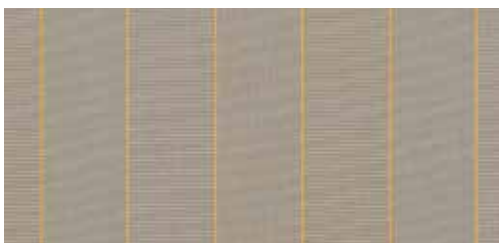
981/929



983/926



975/926



982/97





407/14



929



407/926



14



58/15



930



926



24





Country Style

980/3



975/84



979/2



977/84



981/84



978/7



976/84



982/84





407/16



929



407/84



926



7



15/1



84



930





Sea Side

980/1



981/14



979/3



984/14



974/87



978/92



985/87



983/92



All samples are produced with standard print colors and may therefore deviate from the original color shades.



782/14



15



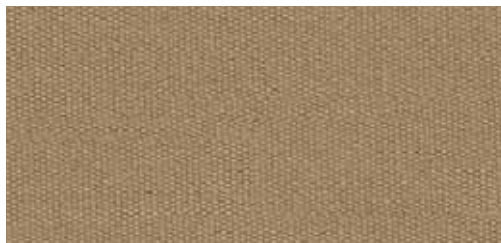
782/87



15/1



14



98



87



92

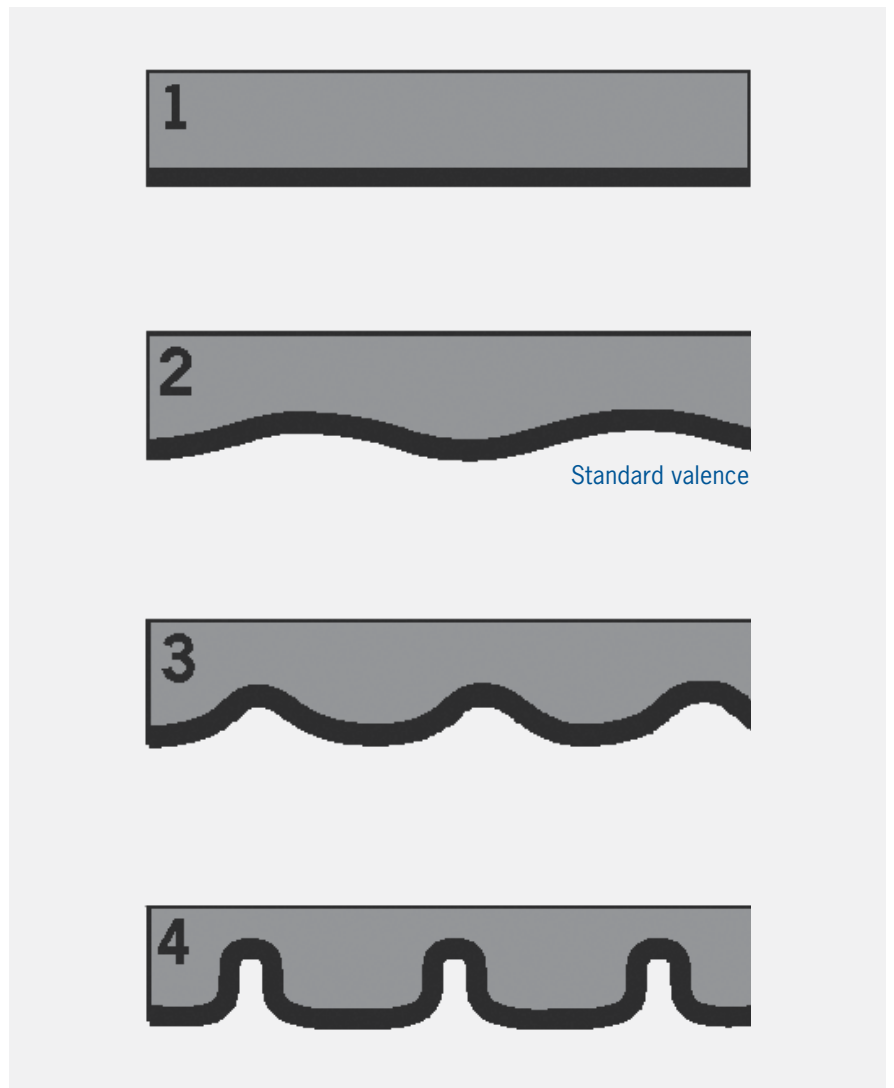








Valence and valence edge bindings





00



94



18



20



11



14



58



27



25



19



92



87



75



62



441



07



30



05



32



54



79



81



82



85



84



86



801



804



802



Folding crease dark in transmitted light



Waviness next to a seam



Finissaggio ad alta tecnologia
High technology finishing
“High-technology” Ausrüstung
Acabado de alta tecnologia



Oeko-Tex Standard 100

KEY

T_e	= transmission coefficient solar spectrum
T_v	= transmission coefficient visible spectrum
R_e	= reflection coefficient solar spectrum
R_v	= reflection coefficient visible spectrum
HS	= heat protection
LS	= light protection
BS	= glare protection
SPF	= sun protection factor (UV protection factor)
$g\text{-tot}_e$	= total energy transmittance

PRODUCT CHARACTERISTICS OF AWNING FABRICS

The fabric of an awning primarily offers protection from glares, UV radiation and excessive heat. In addition, the forms and colors of the fabric pattern convey a pleasant atmosphere. Despite modern and meticulous production processes, it is not possible to avoid minor blemishes in processed fabrics. For this reason, we unfortunately have to rule these out as a grounds for complaint. The technical fabrics we process meet strict technical requirements and are subjected to comprehensive laboratory tests in the production process. The most widely varying characteristics are consistently checked using recognized measurement processes.

CREASES

Creases arise during the production and folding of the sun protection fabric. A dark line can be seen at the crease location against the light, especially in the case of light colors.

WAVINESS IN THE SEAM AREA

Awning fabrics are normally produced from strips about 120 cm wide. When sewn together, an upper and lower layer of fabric arises in the seam and hem area. If the awning fabric is rolled up, tension arises between these layers of fabric, since the upper fabric strip has to cover a longer distance than the lower during rolling. The seams and side hem are overstretched across the entire rolling length of the fabric. This leads to sagging in this area – the fabric becomes wavy here. This unavoidable effect has no influence on the quality, function or durability of the fabrics.

HONEYCOMBING EFFECT

Awning fabrics are sewn in the projection direction to enable the tensile stress to act on the warp threads. These are woven more densely than the weft threads for optimal absorption of the tensile forces. This creates the honeycombing effect, depending on weather conditions and fabric sizes. This effect is reinforced by unfavorable light or moisture – especially if the fabric is retracted while wet. To enable rainwater to flow off, the fabric slant must be at least 14°. This counteracts the formation of water deposits and dirt streaks. The honeycombing can extend up to the center of the fabric strip. This effect has no influence on the quality, function or durability of the fabrics.

DIRT-, WATER- AND OIL-REPELLENT

Thanks to the innovative nano-coating on Griesser fabrics, dirt simply rolls right off.

SAFE FOR PEOPLE AND THE ENVIRONMENT

The Oeko-Text Standard 100 quality seal guarantees that Griesser fabrics do not contain any materials that could be harmful to health or the environment.

MATERIAL NO.	T_e	T_v	R_e	R_v	HS	LS	BS	SPF	g-tot_e
URBAN STYLE									
980/2	0.19	0.18	0.54	0.53	81	82	>10%, T _v <20%	40	0.18
979/1	0.10	0.08	0.35	0.34	90	92	T _v <10%	80	0.14
981/929	0.17	0.14	0.50	0.48	83	86	>10%, T _v <20%	40	0.17
975/926	0.19	0.16	0.52	0.49	81	84	>10%, T _v <20%	40	0.19
977/926	0.11	0.09	0.42	0.39	89	91	T _v <10%	80	0.14
969	0.19	0.17	0.53	0.50	81	83	>10%, T _v <20%	40	0.19
983/926	0.09	0.07	0.38	0.35	91	93	T _v <10%	80	0.13
982/97	0.13	0.10	0.43	0.39	87	90	>10%, T _v <20%	80	0.15
407/14	0.12	0.08	0.41	0.37	88	92	T _v <10%	80	0.15
407/926	0.18	0.17	0.52	0.49	82	83	>10%, T _v <20%	40	0.18
58/15	0.17	0.13	0.43	0.40	83	87	>10%, T _v <20%	40	0.18
926	0.07	0.04	0.39	0.34	93	96	T _v <10%	80	0.11
929	0.20	0.18	0.55	0.53	80	82	>10%, T _v <20%	40	0.19
14	0.07	0.02	0.34	0.27	93	98	T _v <10%	80	0.12
930	0.04	0.01	0.25	0.10	96	99	T _v <10%	80	0.10
24	0.01	0.01	0.16	0.04	99	99	T _v <10%	80	0.09
COUNTRY STYLE									
980/3	0.19	0.18	0.55	0.54	81	82	>10%, T _v <20%	40	0.18
979/2	0.12	0.10	0.40	0.38	88	90	T _v <10%	80	0.15
981/84	0.08	0.06	0.33	0.30	92	94	T _v <10%	80	0.12
976/84	0.17	0.14	0.52	0.48	83	86	>10%, T _v <20%	40	0.17
975/84	0.15	0.12	0.45	0.40	85	88	>10%, T _v <20%	40	0.16
977/84	0.08	0.06	0.34	0.26	92	94	T _v <10%	80	0.12
978/7	0.16	0.14	0.46	0.45	84	86	>10%, T _v <20%	40	0.17
982/84	0.10	0.08	0.37	0.32	90	92	T _v <10%	80	0.13
407/16	0.14	0.11	0.45	0.42	86	89	>10%, T _v <20%	80	0.16
407/84	0.16	0.13	0.51	0.46	84	87	>10%, T _v <20%	40	0.17
7	0.04	0.01	0.16	0.10	96	99	T _v <10%	80	0.11
84	0.05	0.01	0.23	0.10	95	99	T _v <10%	80	0.11
929	0.20	0.18	0.55	0.53	80	82	>10%, T _v <20%	40	0.19
926	0.07	0.04	0.39	0.34	93	96	T _v <10%	80	0.11
15/1	0.17	0.15	0.50	0.50	83	85	>10%, T _v <20%	40	0.17
930	0.04	0.01	0.25	0.10	96	99	T _v <10%	80	0.10
SEA SIDE									
980/1	0.11	0.07	0.39	0.36	89	93	T _v <10%	80	0.14
979/3	0.12	0.09	0.43	0.40	88	91	T _v <10%	80	0.14
974/87	0.14	0.11	0.48	0.45	86	89	>10%, T _v <20%	80	0.15
985/87	0.09	0.07	0.33	0.31	91	93	T _v <10%	80	0.13
981/14	0.12	0.09	0.41	0.39	88	91	T _v <10%	80	0.15
984/14	0.10	0.06	0.33	0.30	90	94	T _v <10%	80	0.14
978/92	0.14	0.12	0.44	0.42	86	88	>10%, T _v <20%	80	0.16
983/92	0.08	0.04	0.28	0.20	92	96	T _v <10%	80	0.13
782/14	0.19	0.15	0.56	0.51	85	89	>10%, T _v <20%	40	0.18
782/87	0.14	0.11	0.49	0.43	86	89	>10%, T _v <20%	80	0.15
14	0.07	0.02	0.34	0.27	93	98	T _v <10%	80	0.12
87	0.04	0.01	0.21	0.05	96	99	T _v <10%	80	0.11
15	0.27	0.26	0.67	0.67	73	74	T _v >20%	30	0.23
15/1	0.17	0.15	0.50	0.50	83	85	>10%, T _v <20%	40	0.17
98	0.05	0.01	0.21	0.09	95	99	T _v <10%	80	0.11
92	0.01	0.01	0.15	0.05	99	99	T _v <10%	80	0.09



Griesser solar shading – quality since 1882.

Griesser AG
Tänikonstrasse 3
8355 Aadorf
Switzerland
www.griessergroup.com

