

**Collection Screen.  
The automatic choice.**



Bâtiment Nice Meridia - Nice (06) / © Reichen et Robert & Associés architectes - urbanistes



## Collection Screen

## Classic Satiné 5500

**MONTANA**



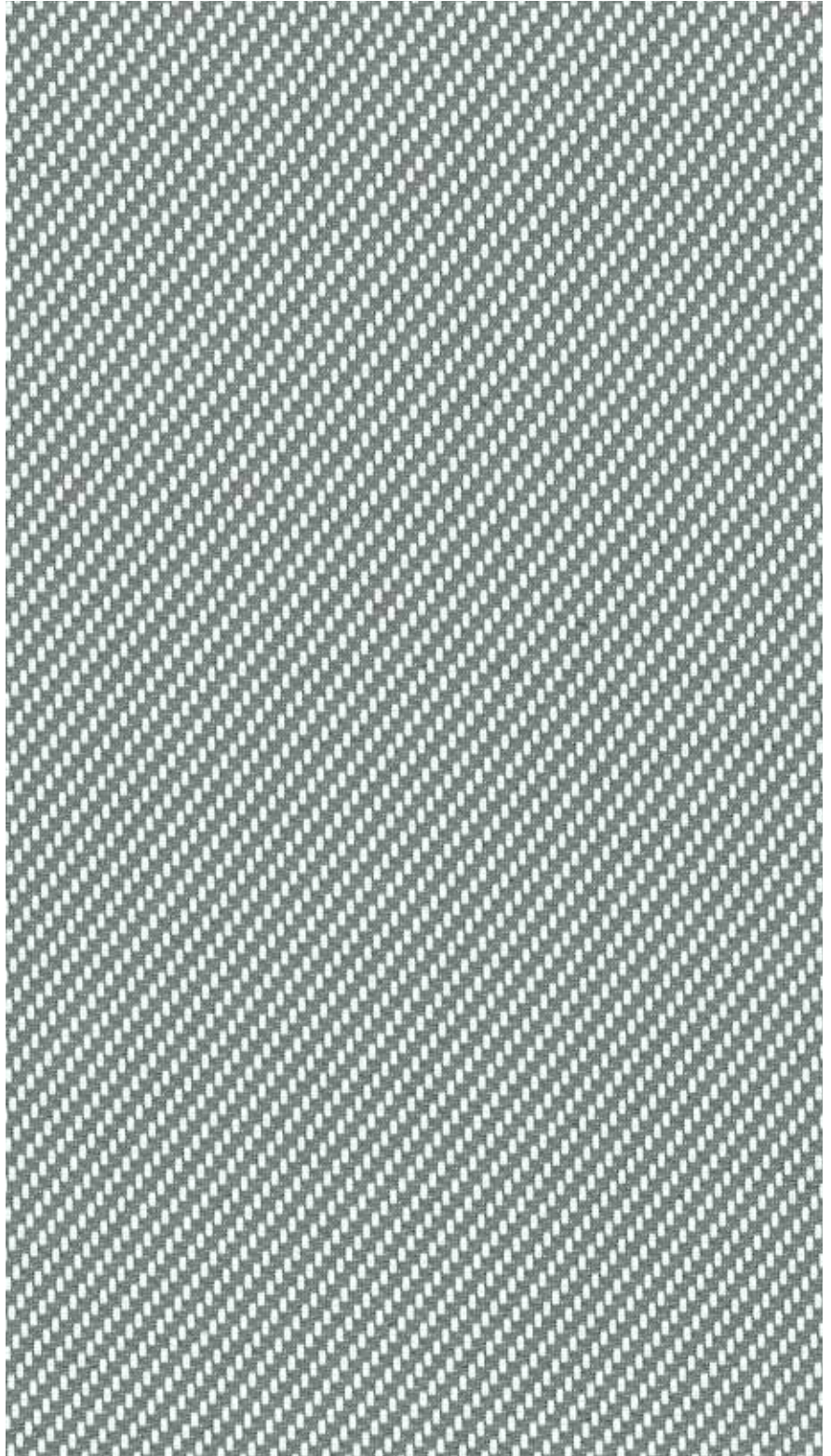
**ETNA**



**SAHARA**



**BORA BORA**



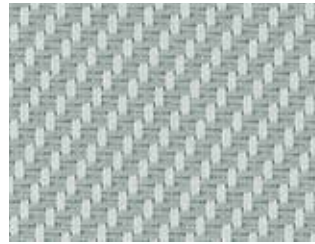
Montana - 0201 Blanc Gris



## Montana

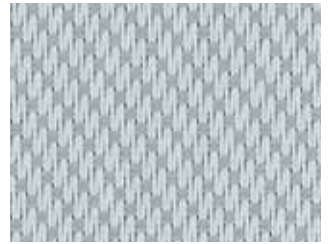


0202 Blanc



(A)

0207 Blanc Perle



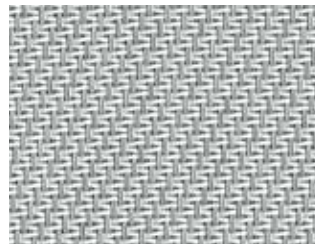
(B)



(A)

M36 020207 Blanc Blanc Perle

(B)

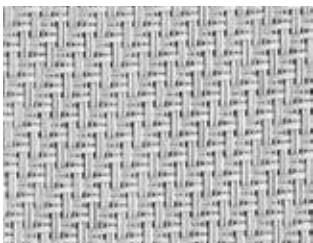


(A)

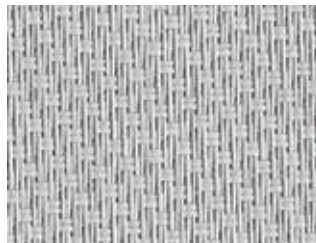
0702 Perle Blanc



(B)



0707 Perle



(A)

0701 Perle Gris



(B)



0101 Gris

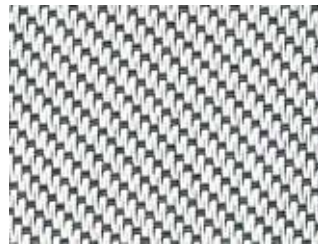
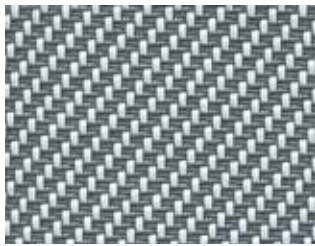


(A)

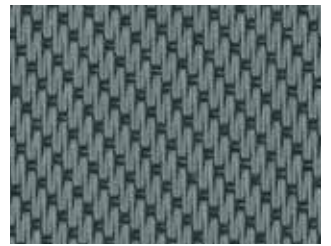
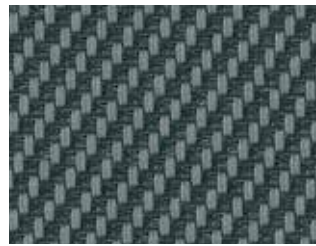
0102 Gris Blanc



(B)



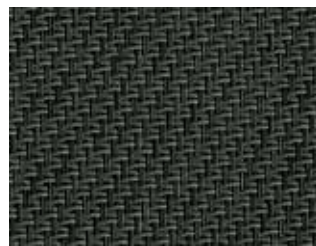
(A) 0201 Blanc Gris (B)



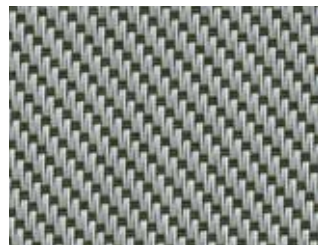
(A) 0130 Gris Charcoal (B)



(A) M38 300120 Charcoal Gris Lin (B)



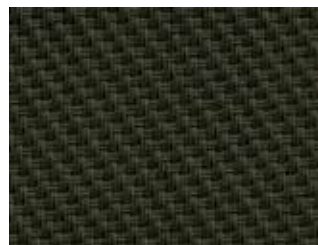
3030 Charcoal



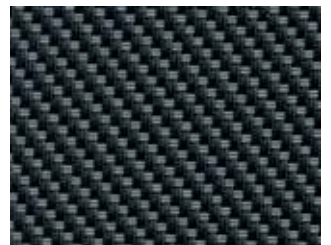
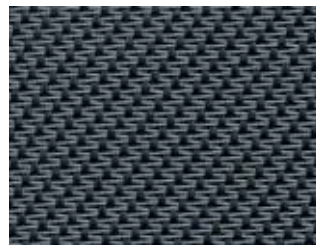
(A) 0706 Perle Bronze (B)



(A) 3006 Charcoal Bronze (B)



0606 Bronze



(A) 3001 Charcoal Gris (B)



# Etna

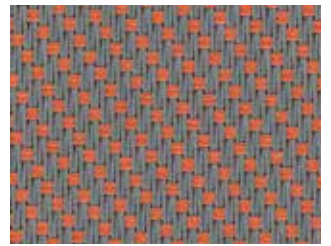


0909 Mandarine

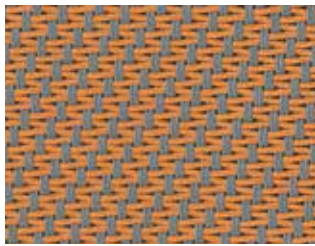


(A)

0109 Gris Mandarine

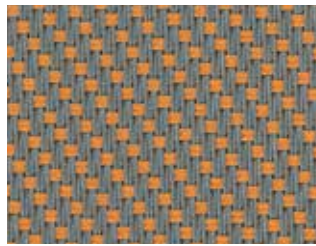


(B)



(A)

0108 Gris Or

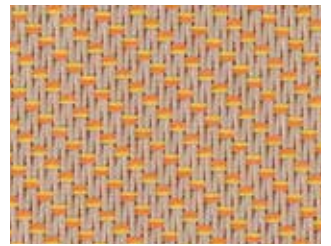


(B)



(A)

M65 100508 Sable Canari Or



(B)

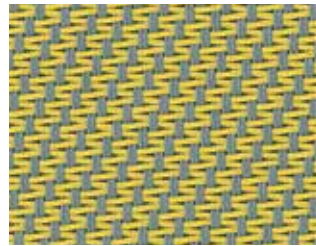


(A)

M64 100520 Sable Canari Lin

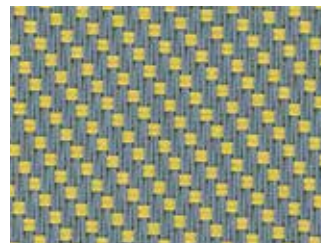


(B)

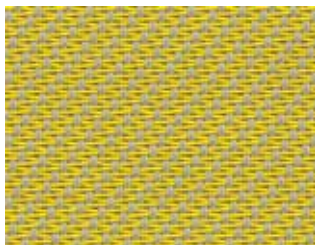


(A)

0105 Gris Canari

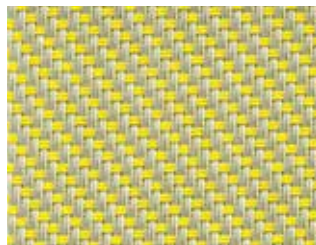


(B)



(A)

0705 Perle Canari



(B)

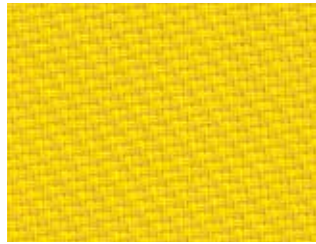
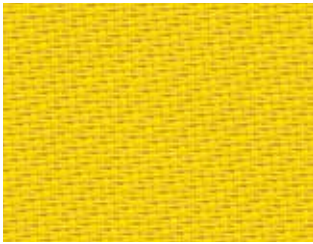


(A)

0205 Blanc Canari



(B)



0505 Canari



## Sahara

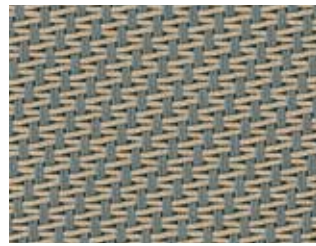


(A)

1006 Sable Bronze



(B)



(A)

0110 Gris Sable



(B)



1010 Sable



(A)

0710 Perle Sable



(B)



(A)

M45 070210 Perle Blanc Sable



(B)



(A)

M37 200710 Lin Perle Sable



(B)



(A)

0720 Perle Lin



(B)



(A)

1002 Sable Blanc



(B)

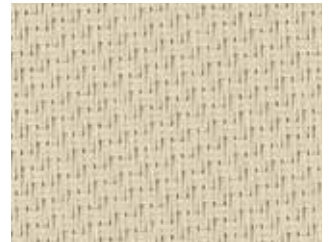




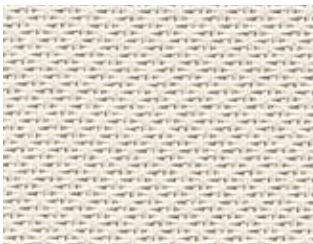
(A)

0210 Blanc Sable

(B)



2020 Lin



(A)

2002 Lin Blanc

(B)



(A)

1001 Sable Gris

(B)



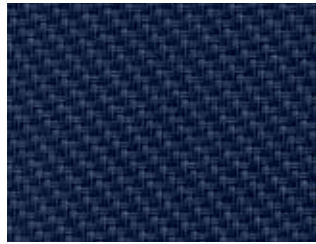
(A)

2001 Lin Gris

(B)



## Bora Bora



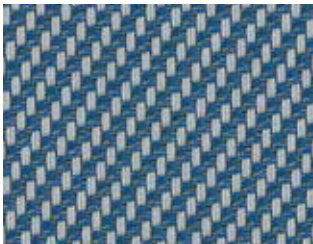
4040 Outremer



(A)

0140 Gris Outremer

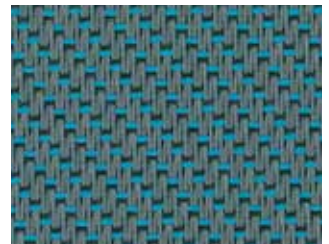
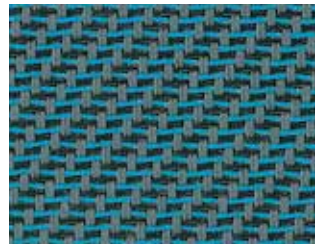
(B)



(A)

0740 Perle Outremer

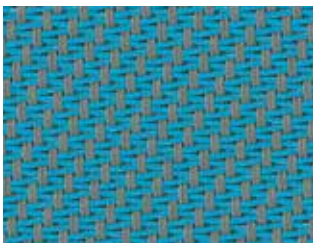
(B)



(A)

M01 010330 Gris Turquoise Charcoal

(B)



(A)

0103 Gris Turquoise

(B)



(A)

0703 Perle Turquoise

(B)



(A)

M02 020310 Blanc Turquoise Sable

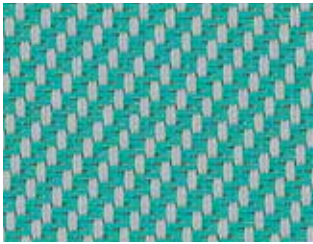
(B)



(A)

0150 Gris Vert

(B)






(A)




0750 Perle Vert



(B)

## FABRIC PROPERTIES - CLASSIC SATINÉ

| DESIGN         | FACE | COLOR             |  |  | FABRIC         |                |                |                | SUNFACTOR            | SUNFACTOR            |  |
|----------------|------|-------------------|---|---|----------------|----------------|----------------|----------------|----------------------|----------------------|---|
|                |      |                   |   |   | T <sub>e</sub> | R <sub>e</sub> | A <sub>e</sub> | T <sub>v</sub> | g-total <sub>e</sub> | g-total <sub>i</sub> |   |
| <b>MONTANA</b> |      |                   |   |   |                |                |                |                |                      |                      |   |
| 0202           |      | Blanc             | 0.52  | 0.75  | 0.23           | 0.66           | 0.11           | 0.23           | 0.16                 | 0.36                 | M1/B1/C-s3,d0   |
| 0207           | A    | Blanc Perle       | 0.52  | 0.75  | 0.13           | 0.50           | 0.37           | 0.11           | 0.12                 | 0.41                 | "   |
|                | B    |                   |   |   | 0.13           | 0.57           | 0.30           | 0.11           | 0.11                 | 0.38                 | "   |
| M36 020207     | A    | Blanc Blanc Perle | 0.52  | 0.75  | 0.19           | 0.58           | 0.23           | 0.19           | 0.15                 | 0.38                 | "   |
|                | B    |                   |   |   | 0.19           | 0.61           | 0.20           | 0.19           | 0.14                 | 0.37                 | "   |
| 0702           | A    | Perle Blanc       | 0.52  | 0.75  | 0.15           | 0.53           | 0.32           | 0.14           | 0.13                 | 0.40                 | "   |
|                | B    |                   |   |   | 0.15           | 0.47           | 0.38           | 0.14           | 0.13                 | 0.42                 | "   |
| 0707           |      | Perle             | 0.52  | 0.75  | 0.14           | 0.36           | 0.50           | 0.12           | 0.14                 | 0.45                 | "   |
| 0701           | A    | Perle Gris        | 0.52  | 0.75  | 0.11           | 0.25           | 0.64           | 0.10           | 0.13                 | 0.49                 | "   |
|                | B    |                   |   |   | 0.11           | 0.31           | 0.58           | 0.10           | 0.12                 | 0.47                 | "   |
| 0101           |      | Gris              | 0.52  | 0.75  | 0.10           | 0.20           | 0.70           | 0.08           | 0.13                 | 0.50                 | "   |
| 0102           | A    | Gris Blanc        | 0.52  | 0.75  | 0.11           | 0.41           | 0.48           | 0.09           | 0.12                 | 0.44                 | "   |
|                | B    |                   |   |   | 0.11           | 0.32           | 0.57           | 0.09           | 0.12                 | 0.47                 | "   |
| 0201           | A    | Blanc Gris        | 0.52  | 0.75  | 0.14           | 0.39           | 0.47           | 0.11           | 0.13                 | 0.44                 | "   |
|                | B    |                   |   |   | 0.13           | 0.50           | 0.37           | 0.11           | 0.12                 | 0.41                 | "   |
| 0130           | A    | Gris Charcoal     | 0.52  | 0.75  | 0.07           | 0.12           | 0.81           | 0.07           | 0.12                 | 0.53                 | "   |
|                | B    |                   |   |   | 0.07           | 0.16           | 0.77           | 0.07           | 0.11                 | 0.52                 | "   |
| M38 300120     | A    | Charcoal Gris Lin | 0.52  | 0.75  | 0.05           | 0.21           | 0.74           | 0.05           | 0.10                 | 0.50                 | "   |
|                | B    |                   |   |   | 0.05           | 0.14           | 0.81           | 0.05           | 0.10                 | 0.52                 | "   |
| 3030           |      | Charcoal          | 0.52  | 0.75  | 0.07           | 0.06           | 0.87           | 0.07           | 0.12                 | 0.54                 | "   |
| 0706           | A    | Perle Bronze      | 0.52  | 0.75  | 0.09           | 0.20           | 0.71           | 0.08           | 0.12                 | 0.50                 | "   |
|                | B    |                   |   |   | 0.09           | 0.28           | 0.63           | 0.08           | 0.12                 | 0.48                 | "   |
| 3006           | A    | Charcoal Bronze   | 0.52  | 0.75  | 0.04           | 0.07           | 0.89           | 0.04           | 0.10                 | 0.54                 | "   |
|                | B    |                   |   |   | 0.04           | 0.07           | 0.89           | 0.04           | 0.10                 | 0.54                 | "   |
| 0606           |      | Bronze            | 0.52  | 0.75  | 0.05           | 0.09           | 0.86           | 0.05           | 0.11                 | 0.54                 | "   |
| 3001           | A    | Charcoal Gris     | 0.52  | 0.75  | 0.06           | 0.14           | 0.80           | 0.05           | 0.11                 | 0.52                 | "   |
|                | B    |                   |   |   | 0.06           | 0.10           | 0.84           | 0.05           | 0.11                 | 0.54                 | "   |
| <b>ETNA</b>    |      |                   |   |   |                |                |                |                |                      |                      |   |
| 0909           |      | Mandarine         | 0.52  | 0.75  | 0.24           | 0.42           | 0.34           | 0.10           | 0.19                 | 0.44                 | M1/B1/C-s3,d0   |
| 0109           | A    | Gris Mandarine    | 0.52  | 0.75  | 0.12           | 0.29           | 0.59           | 0.07           | 0.13                 | 0.48                 | "   |
|                | B    |                   |   |   | 0.12           | 0.24           | 0.64           | 0.07           | 0.14                 | 0.49                 | "   |
| 0108           | A    | Gris Or           | 0.52  | 0.75  | 0.11           | 0.32           | 0.57           | 0.07           | 0.12                 | 0.47                 | "   |
|                | B    |                   |   |   | 0.11           | 0.27           | 0.62           | 0.07           | 0.13                 | 0.48                 | "   |
| M65 100508     | A    | Sable Canari Or   | 0.52  | 0.75  | 0.15           | 0.43           | 0.42           | 0.10           | 0.14                 | 0.43                 | "   |
|                | B    |                   |   |   | 0.15           | 0.42           | 0.43           | 0.10           | 0.14                 | 0.43                 | "   |
| M64 100520     | A    | Sable Canari Lin  | 0.52  | 0.75  | 0.18           | 0.46           | 0.36           | 0.14           | 0.15                 | 0.42                 | "   |
|                | B    |                   |   |   | 0.18           | 0.44           | 0.38           | 0.14           | 0.15                 | 0.43                 | "   |
| 0105           | A    | Gris Canari       | 0.52  | 0.75  | 0.11           | 0.33           | 0.56           | 0.08           | 0.12                 | 0.46                 | "   |
|                | B    |                   |   |   | 0.11           | 0.28           | 0.61           | 0.08           | 0.13                 | 0.48                 | "   |
| 0705           | A    | Perle Canari      | 0.52  | 0.75  | 0.17           | 0.43           | 0.40           | 0.14           | 0.15                 | 0.43                 | "   |
|                | B    |                   |   |   | 0.17           | 0.43           | 0.40           | 0.14           | 0.15                 | 0.43                 | "   |
| 0205           | A    | Blanc Canari      | 0.52  | 0.75  | 0.22           | 0.58           | 0.20           | 0.19           | 0.16                 | 0.38                 | "   |
|                | B    |                   |   |   | 0.22           | 0.61           | 0.17           | 0.19           | 0.16                 | 0.37                 | "   |
| 0505           |      | Canari            | 0.52  | 0.75  | 0.21           | 0.52           | 0.27           | 0.16           | 0.16                 | 0.40                 | "   |
| <b>SAHARA</b>  |      |                   |   |   |                |                |                |                |                      |                      |   |
| 1006           | A    | Sable Bronze      | 0.52  | 0.75  | 0.09           | 0.19           | 0.72           | 0.08           | 0.12                 | 0.51                 | M1/B1/C-s3,d0   |
|                | B    |                   |   |   | 0.09           | 0.26           | 0.65           | 0.08           | 0.12                 | 0.48                 | "   |
| 0110           | A    | Gris Sable        | 0.52  | 0.75  | 0.08           | 0.31           | 0.61           | 0.06           | 0.11                 | 0.47                 | "   |
|                | B    |                   |   |   | 0.08           | 0.27           | 0.65           | 0.06           | 0.11                 | 0.48                 | "   |
| 1010           |      | Sable             | 0.52  | 0.75  | 0.13           | 0.40           | 0.47           | 0.08           | 0.13                 | 0.44                 | "   |
| 0710           | A    | Perle Sable       | 0.52  | 0.75  | 0.14           | 0.38           | 0.48           | 0.11           | 0.14                 | 0.45                 | "   |
|                | B    |                   |   |   | 0.14           | 0.39           | 0.47           | 0.11           | 0.13                 | 0.44                 | "   |
| M45 070210     | A    | Perle Blanc Sable | 0.52  | 0.75  | 0.10           | 0.46           | 0.44           | 0.09           | 0.11                 | 0.42                 | "   |
|                | B    |                   |   |   | 0.10           | 0.44           | 0.46           | 0.09           | 0.11                 | 0.43                 | "   |
| M37 200710     | A    | Lin Perle Sable   | 0.52  | 0.75  | 0.15           | 0.45           | 0.40           | 0.12           | 0.13                 | 0.42                 | "   |
|                | B    |                   |   |   | 0.15           | 0.49           | 0.36           | 0.12           | 0.13                 | 0.41                 | "   |
| 0720           | A    | Perle Lin         | 0.52  | 0.75  | 0.17           | 0.45           | 0.38           | 0.15           | 0.15                 | 0.43                 | "   |
|                | B    |                   |   |   | 0.17           | 0.43           | 0.40           | 0.15           | 0.15                 | 0.42                 | "   |

| DESIGN           | FACE | COLOR                   |  |  | FABRIC |       |       |       | SUNFACTOR OUTSIDE  | SUNFACTOR INSIDE   |  |
|------------------|------|-------------------------|---|---|--------|-------|-------|-------|--------------------|--------------------|---|
|                  |      |                         |   |   | $T_e$  | $R_e$ | $A_e$ | $T_v$ | $g\text{-total}_e$ | $g\text{-total}_i$ |   |
| 1002             | A    | Sable Blanc             | 0.52  | 0.75  | 0.14   | 0.54  | 0.32  | 0.10  | 0.12               | 0.39               | M1/B1/C-s3,d0   |
|                  | B    |                         | 0.52  | 0.75  | 0.14   | 0.49  | 0.37  | 0.10  | 0.13               | 0.41               | "   |
| 0210             | A    | Blanc Sable             | 0.52  | 0.75  | 0.16   | 0.50  | 0.34  | 0.15  | 0.14               | 0.41               | "   |
|                  | B    |                         | 0.52  | 0.75  | 0.16   | 0.56  | 0.28  | 0.15  | 0.13               | 0.39               | "   |
| 2020             |      | Lin                     | 0.52  | 0.75  | 0.18   | 0.52  | 0.30  | 0.15  | 0.15               | 0.40               | "   |
| 2002             | A    | Lin Blanc               | 0.52  | 0.75  | 0.19   | 0.60  | 0.21  | 0.16  | 0.14               | 0.38               | "   |
|                  | B    |                         | 0.52  | 0.75  | 0.19   | 0.58  | 0.23  | 0.16  | 0.15               | 0.38               | "   |
| 1001             | A    | Sable Gris              | 0.52  | 0.75  | 0.11   | 0.32  | 0.57  | 0.08  | 0.13               | 0.47               | "   |
|                  | B    |                         | 0.52  | 0.75  | 0.11   | 0.32  | 0.57  | 0.08  | 0.13               | 0.47               | "   |
| 2001             | A    | Lin Gris                | 0.52  | 0.75  | 0.14   | 0.34  | 0.52  | 0.11  | 0.14               | 0.46               | "   |
|                  | B    |                         | 0.52  | 0.75  | 0.14   | 0.42  | 0.44  | 0.11  | 0.13               | 0.43               | "   |
| <b>BORA BORA</b> |      |                         |   |   |        |       |       |       |                    |                    |   |
| 4040             |      | Outremer                | 0.52  | 0.75  | 0.16   | 0.28  | 0.56  | 0.07  | 0.16               | 0.48               | M1/B1/C-s3,d0   |
| 0140             | A    | Gris Outremer           | 0.52  | 0.75  | 0.11   | 0.21  | 0.68  | 0.07  | 0.13               | 0.50               | "   |
|                  | B    |                         | 0.52  | 0.75  | 0.11   | 0.21  | 0.68  | 0.07  | 0.13               | 0.50               | "   |
| 0740             | A    | Perle Outremer          | 0.52  | 0.75  | 0.12   | 0.29  | 0.59  | 0.06  | 0.13               | 0.48               | "   |
|                  | B    |                         | 0.52  | 0.75  | 0.12   | 0.32  | 0.56  | 0.06  | 0.13               | 0.47               | "   |
| M01 010330       | A    | Gris Turquoise Charcoal | 0.52  | 0.75  | 0.07   | 0.20  | 0.73  | 0.05  | 0.11               | 0.50               | "   |
|                  | B    |                         | 0.52  | 0.75  | 0.07   | 0.20  | 0.73  | 0.05  | 0.11               | 0.50               | "   |
| 0103             | A    | Gris Turquoise          | 0.52  | 0.75  | 0.09   | 0.29  | 0.62  | 0.06  | 0.11               | 0.47               | "   |
|                  | B    |                         | 0.52  | 0.75  | 0.09   | 0.26  | 0.65  | 0.06  | 0.12               | 0.48               | "   |
| 0703             | A    | Perle Turquoise         | 0.52  | 0.75  | 0.13   | 0.39  | 0.48  | 0.08  | 0.13               | 0.44               | "   |
|                  | B    |                         | 0.52  | 0.75  | 0.13   | 0.39  | 0.48  | 0.08  | 0.13               | 0.44               | "   |
| M02 020310       | A    | Blanc Turquoise Sable   | 0.52  | 0.75  | 0.17   | 0.52  | 0.31  | 0.13  | 0.14               | 0.40               | "   |
|                  | B    |                         | 0.52  | 0.75  | 0.17   | 0.58  | 0.25  | 0.13  | 0.13               | 0.38               | "   |
| 0150             | A    | Gris Vert               | 0.52  | 0.75  | 0.09   | 0.26  | 0.65  | 0.06  | 0.12               | 0.48               | "   |
|                  | B    |                         | 0.52  | 0.75  | 0.09   | 0.23  | 0.68  | 0.06  | 0.12               | 0.49               | "   |
| 0750             | A    | Perle Vert              | 0.52  | 0.75  | 0.13   | 0.36  | 0.51  | 0.11  | 0.13               | 0.45               | "   |
|                  | B    |                         | 0.52  | 0.75  | 0.13   | 0.37  | 0.50  | 0.11  | 0.13               | 0.45               | "   |

### KEY

$T_e$  = transmission coefficient solar spectrum

$R_e$  = reflection coefficient solar spectrum

$A_e$  = Strahlungsabsorptionsfaktor

$T_v$  = transmission coefficient visible spectrum

$g\text{-total}_e$  = Total energy transmittance for «closed» external solar shading with glazing, Calculation in accordance with SN EN 13363-1-A1, reference glazing C in accordance with EN 14501,  $g = 0.59$ ,  $U = 1.20$  [W/m<sup>2</sup>K]

$g\text{-total}_i$  = interior g-value - reference glazing C in accordance with EN 14501,  $g = 0.59$ ,  $U = 1.20$  [W/m<sup>2</sup>K]



Size



Fire resistance  
M1/NFP 92-503  
B1/DIN 4102-1  
Euroclass C-s3,d0/EN13501







[www.griessergroup.com](http://www.griessergroup.com)

