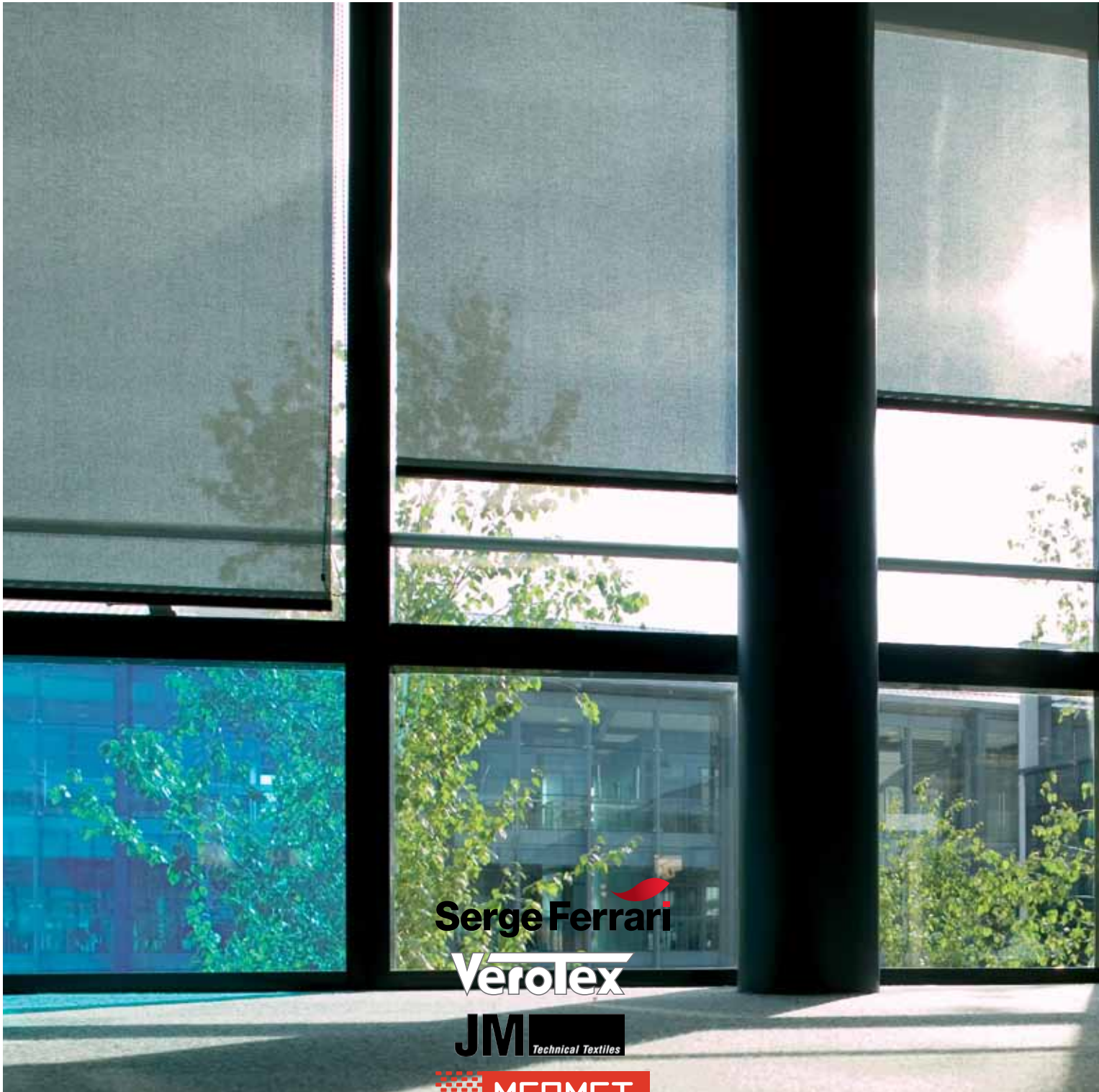


Collection Soloroll.
The automatic choice.



Serge Ferrari

Verotex

JM Technical Textiles

 **MERMET** 36



Polaris (Polyester with PVC)
Alu (A) / Colored (B)



Face Alu* (A)



99-2055 (B)



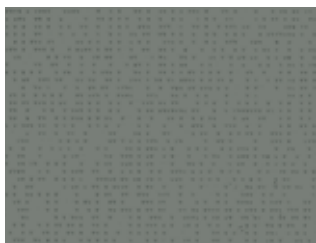
99-2058 (B)



99-2059 (B)



99-2068 (B)



99-2073 (B)



99-50284 (B)



99-50285 (B)



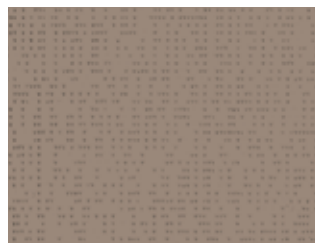
99-50286 (B)



99-50287 (B)



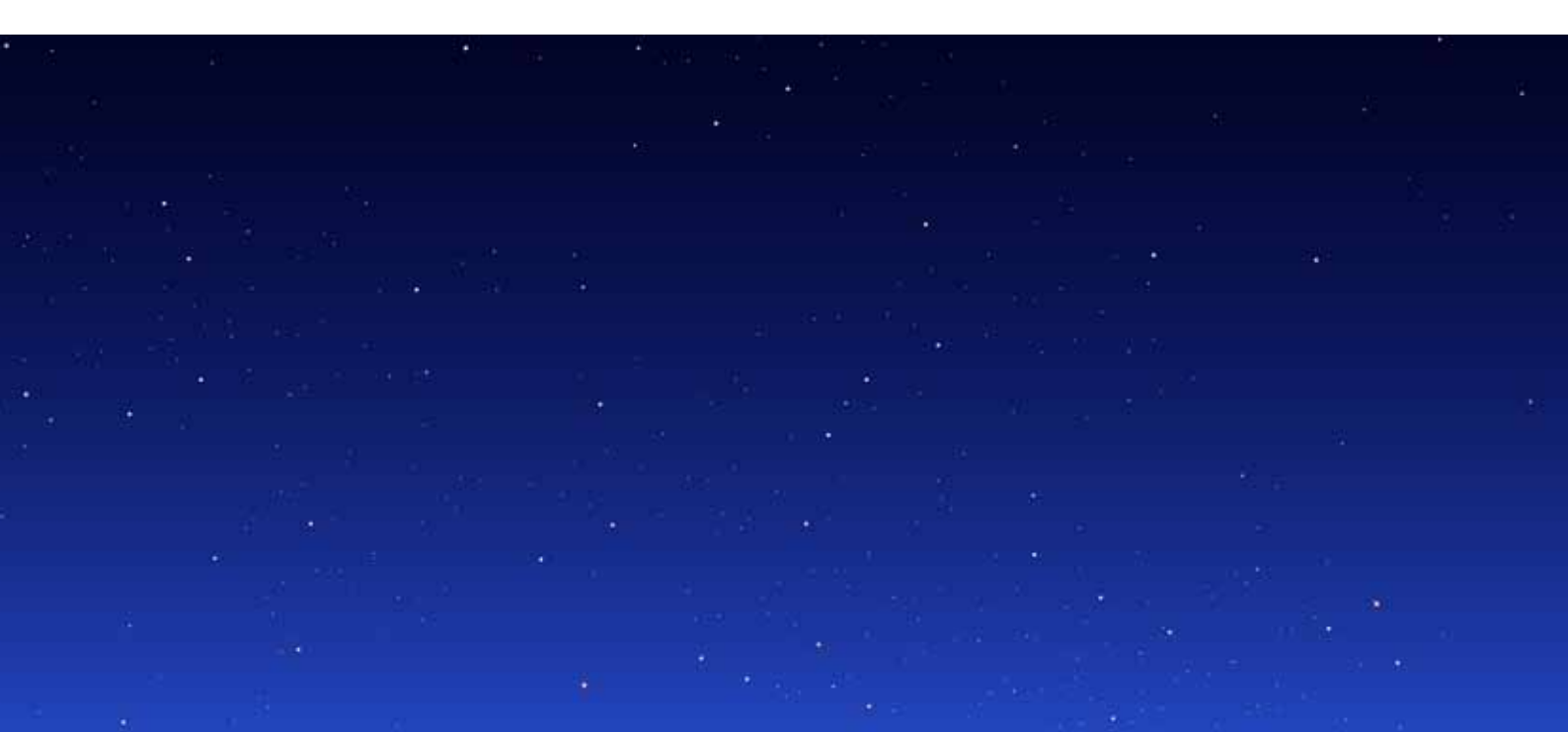
99-50288 (B)



99-50289 (B)



99-50290 (B)



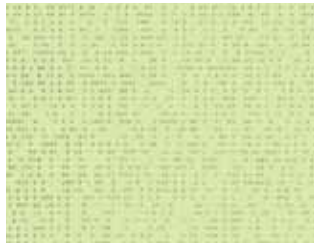
99-50291 (B)



99-50292 (B)



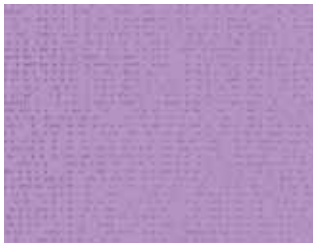
99-50293 (B)



99-50294 (B)



99-50295 (B)



99-50296 (B)



99-50297 (B)



99-50298 (B)



99-50299 (B)



99-50300 (B)

*common to all 99 fabrics colored / alu

All samples are produced with standard print colors and may therefore deviate from the original color shades.

Polaris White (A) / Colored (B)



White face* (A)



99-2115 (B)



99-50277 (B)



99-50278 (B)



99-50279 (B)

Polaris LowE



(A) 99-2061 E



(B)



(A) 99-2063 E



(B)

*Common to all 99 fabrics colored / white

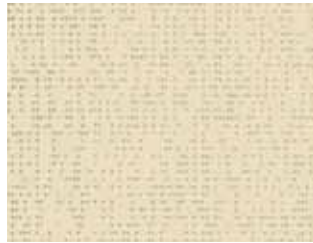
Polaris Opaque



B99-Back alu* (A)



B99-50284 (B)



B99-50285 (B)



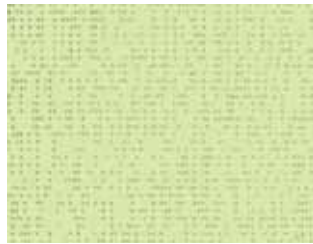
B99-50287 (B)



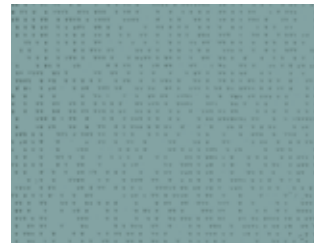
B99-50288 (B)



B99-50293 (B)



B99-50294 (B)



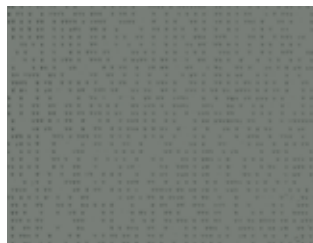
B99-50299 (B)



B99-50300 (B)



B99-50348 (B)



B99-50354 (B)



B99-50358 (B)



(A)



B990-50360 (B)



(A)



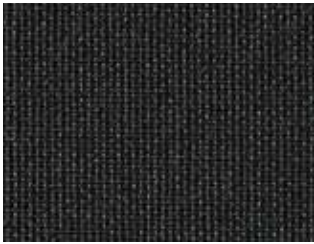
B702-455 (B)

All samples are produced with standard print colors and may therefore deviate from the original color shades.

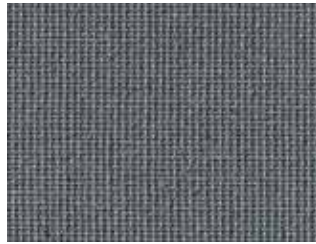
*Common to all B99 fabrics



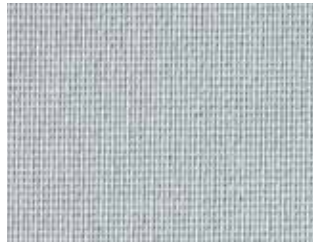
Sirius (Polyester without PVC)



40570-4994



40570-4993



40570-4934



40570-4989



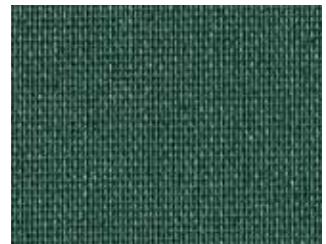
40570-4935



40570-4988



40570-6838



40570-4978



40570-4985



40570-6797



40570-4963



40570-5033



40570-5032



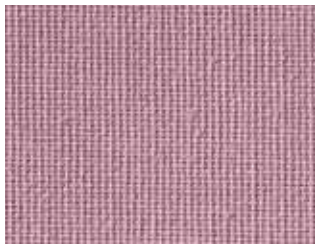
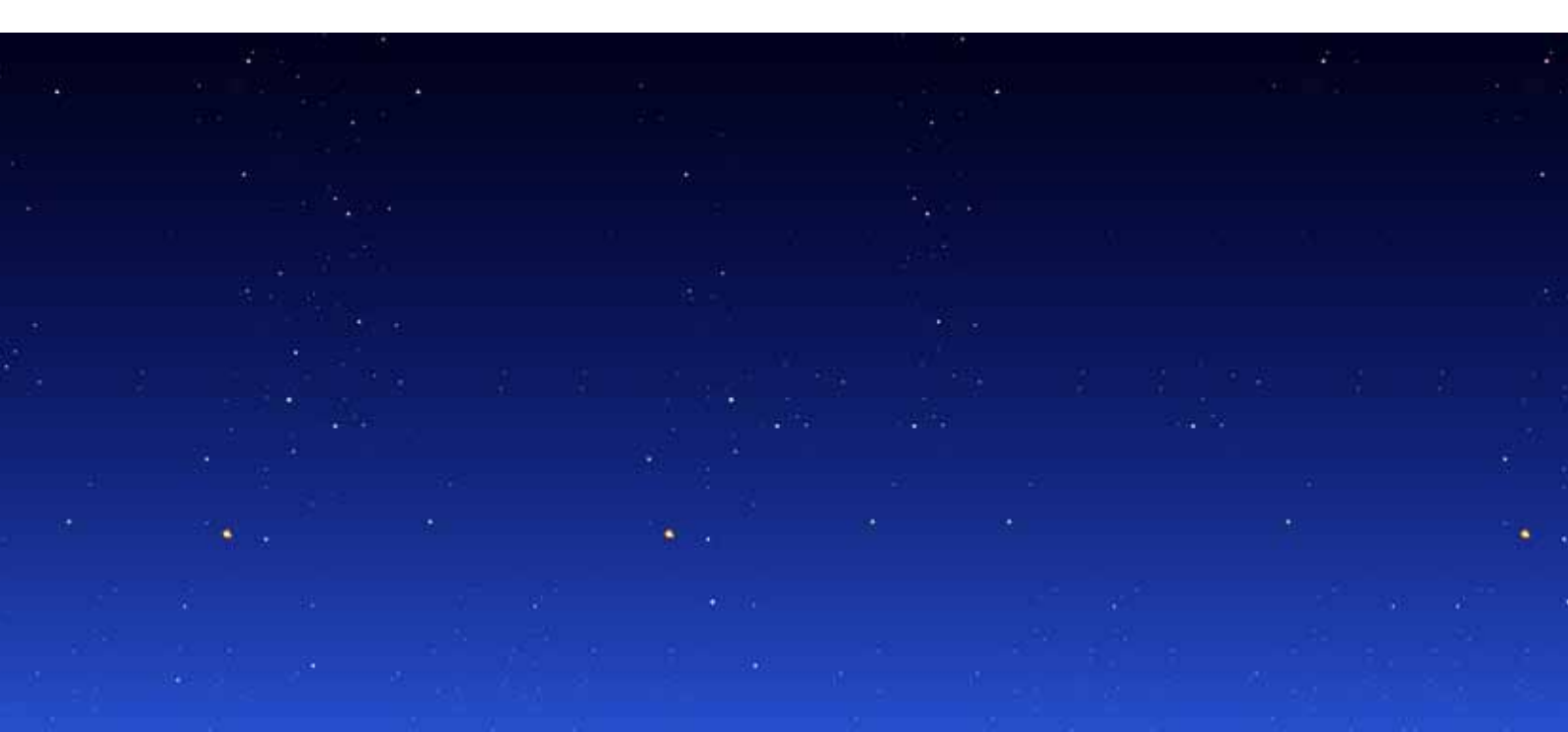
40570-5724



40570-5723



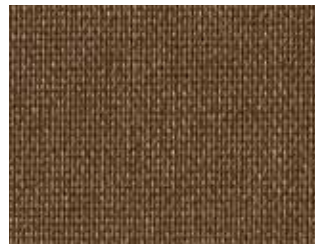
40570-4962



40570-4981



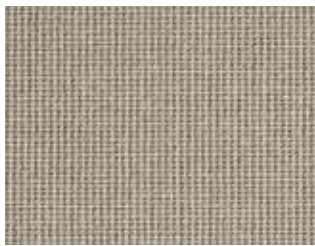
40570-5000



40570-5005



40570-4984



40570-6840



40570-6862



40570-4992

Sirius Obscurcissant



40818-4898



40818-5108



40818-5770

Sirius 40821 Opaque



40821 – Back white* (A)



40821-4898 (B)



40821-4899 (B)



40821-5770 (B)

Sirius 12 121



12-121-1



12-121-24



12-121-25

Sirius 12 228



12-228-1



12-228-7



12-228-9



12-228-3

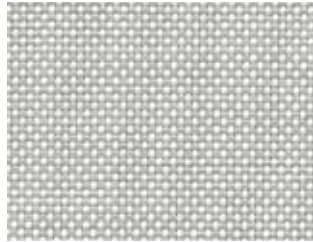
*Common to all 40821 fabrics



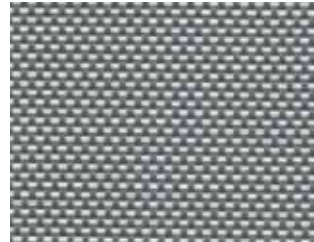
Vega (Fiberglass with PVC) SV 10% and Satiné 5500 LowE



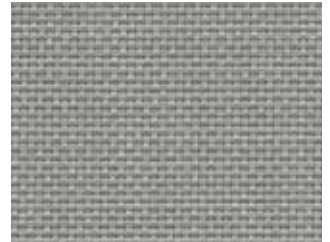
SV10-0202



SV10-0207



SV10-0102



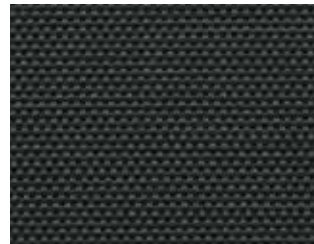
SV10-0707



SV10-0101



SV10-3001



SV10-3030



SV10-0220



SV10-2022



SV10-2020



SV10-0210



SV10-0720



SV10-0110






SV10-3006









Satiné 5500 LowE

All samples are produced with standard print colors and may therefore deviate from the original color shades.

FABRIC PROPERTIES - COLLECTION SOLOROLL

DESIGN	FACE			FABRIC				SUNFACTOR INSIDE	
				T _e	R _e	A _e	T _v		
POLARIS									
99-2055	A	0.29	0.32	0.13	0.48	0.39	0.12	0.41	B1 / VKF 5.2 / B-s2, d0
	B			0.13	0.65	0.22	0.12	0.35	B1 / VKF 5.2 / B-s2, d0
99-2058	A	0.29	0.32	0.09	0.44	0.47	0.08	0.42	B1 / VKF 5.2 / B-s2, d0
	B			0.09	0.42	0.49	0.08	0.43	B1 / VKF 5.2 / B-s2, d0
99-2059	A / B	0.29	0.32	0.05	0.45	0.50	0.05	0.42	B1 / VKF 5.2 / B-s2, d0
99-2068	A	0.29	0.32	0.03	0.36	0.61	0.02	0.44	B1 / VKF 5.2 / B-s2, d0
	B			0.03	0.09	0.88	0.02	0.53	B1 / VKF 5.2 / B-s2, d0
99-2073	A	0.29	0.32	0.04	0.40	0.56	0.03	0.43	B1 / VKF 5.2 / B-s2, d0
	B			0.04	0.25	0.71	0.03	0.48	B1 / VKF 5.2 / B-s2, d0
99-50284	A	0.29	0.32	0.09	0.48	0.43	0.07	0.41	B1 / VKF 5.2 / B-s2, d0
	B			0.09	0.63	0.28	0.07	0.36	B1 / VKF 5.2 / B-s2, d0
99-50285	A	0.29	0.32	0.09	0.47	0.44	0.08	0.41	B1 / VKF 5.2 / B-s2, d0
	B			0.09	0.60	0.31	0.08	0.37	B1 / VKF 5.2 / B-s2, d0
99-50286	A	0.29	0.32	0.06	0.45	0.49	0.05	0.41	B1 / VKF 5.2 / B-s2, d0
	B			0.06	0.46	0.48	0.05	0.41	B1 / VKF 5.2 / B-s2, d0
99-50287	A	0.29	0.32	0.07	0.46	0.47	0.06	0.41	B1 / VKF 5.2 / B-s2, d0
	B			0.07	0.48	0.45	0.06	0.41	B1 / VKF 5.2 / B-s2, d0
99-50288	A	0.29	0.32	0.06	0.44	0.50	0.05	0.42	B1 / VKF 5.2 / B-s2, d0
	B			0.06	0.39	0.55	0.05	0.43	B1 / VKF 5.2 / B-s2, d0
99-50289	A	0.29	0.32	0.06	0.42	0.52	0.05	0.43	B1 / VKF 5.2 / B-s2, d0
	B			0.06	0.30	0.64	0.05	0.46	B1 / VKF 5.2 / B-s2, d0
99-50290	A	0.29	0.32	0.05	0.41	0.54	0.04	0.43	B1 / VKF 5.2 / B-s2, d0
	B			0.05	0.25	0.70	0.04	0.48	B1 / VKF 5.2 / B-s2, d0
99-50291	A	0.29	0.32	0.07	0.47	0.46	0.06	0.41	B1 / VKF 5.2 / B-s2, d0
	B			0.07	0.50	0.43	0.06	0.40	B1 / VKF 5.2 / B-s2, d0
99-50292	A	0.29	0.32	0.11	0.45	0.44	0.09	0.42	B1 / VKF 5.2 / B-s2, d0
	B			0.11	0.52	0.37	0.09	0.40	B1 / VKF 5.2 / B-s2, d0
99-50293	A	0.29	0.32	0.06	0.46	0.48	0.04	0.44	B1 / VKF 5.2 / B-s2, d0
	B			0.06	0.37	0.57	0.04	0.44	B1 / VKF 5.2 / B-s2, d0
99-50294	A	0.29	0.32	0.06	0.47	0.47	0.05	0.41	B1 / VKF 5.2 / B-s2, d0
	B			0.06	0.54	0.40	0.05	0.39	B1 / VKF 5.2 / B-s2, d0
99-50295	A	0.29	0.32	0.08	0.44	0.48	0.06	0.42	B1 / VKF 5.2 / B-s2, d0
	B			0.08	0.36	0.56	0.06	0.44	B1 / VKF 5.2 / B-s2, d0
99-50296	A	0.29	0.32	0.06	0.47	0.47	0.04	0.41	B1 / VKF 5.2 / B-s2, d0
	B			0.06	0.49	0.45	0.04	0.40	B1 / VKF 5.2 / B-s2, d0
99-50297	A	0.29	0.32	0.04	0.42	0.54	0.03	0.43	B1 / VKF 5.2 / B-s2, d0
	B			0.04	0.21	0.75	0.03	0.49	B1 / VKF 5.2 / B-s2, d0
99-50298	A	0.29	0.32	0.07	0.38	0.55	0.04	0.44	B1 / VKF 5.2 / B-s2, d0
	B			0.07	0.17	0.76	0.04	0.50	B1 / VKF 5.2 / B-s2, d0
99-50299	A	0.29	0.32	0.06	0.46	0.48	0.04	0.41	B1 / VKF 5.2 / B-s2, d0
	B			0.06	0.50	0.44	0.04	0.40	B1 / VKF 5.2 / B-s2, d0
99-50300	A	0.29	0.32	0.05	0.48	0.47	0.04	0.41	B1 / VKF 5.2 / B-s2, d0
	B			0.05	0.41	0.54	0.04	0.43	B1 / VKF 5.2 / B-s2, d0
99-2115	A	0.29	0.32	0.07	0.63	0.30	0.06	0.36	B1 / VKF 5.2 / B-s2, d0
	B			0.07	0.12	0.81	0.06	0.52	B1 / VKF 5.2 / B-s2, d0
99-50277	A	0.29	0.32	0.11	0.70	0.19	0.04	0.34	B1 / VKF 5.2 / B-s2, d0
	B			0.11	0.33	0.56	0.04	0.46	B1 / VKF 5.2 / B-s2, d0
99-50278	A	0.29	0.32	0.10	0.67	0.23	0.07	0.35	B1 / VKF 5.2 / B-s2, d0
	B			0.10	0.26	0.64	0.07	0.48	B1 / VKF 5.2 / B-s2, d0
99-50279	A	0.29	0.32	0.11	0.67	0.22	0.08	0.35	B1 / VKF 5.2 / B-s2, d0
	B			0.11	0.27	0.62	0.08	0.47	B1 / VKF 5.2 / B-s2, d0
99-2061 E	A	0.29	0.32	0.06	0.69	0.25	0.06	0.34	B1 / VKF 5.2 / B-s2, d0
	B			0.06	0.68	0.26	0.06	0.34	B1 / VKF 5.2 / B-s2, d0
99-2063 E	A / B	0.29	0.32	0.03	0.71	0.26	0.02	0.34	B1 / VKF 5.2 / B-s2, d0
B99-50284	B	0.54	0.47	0	0.62	0.38	0	0.36	B1 / B-s2, d0
B99-50285	B	0.54	0.47	0	0.61	0.39	0	0.36	B1 / B-s2, d0
B99-50287	B	0.54	0.47	0	0.47	0.53	0	0.41	B1 / B-s2, d0
B99-50288	B	0.54	0.47	0	0.40	0.60	0	0.43	B1 / B-s2, d0
B99-50293	B	0.54	0.47	0	0.36	0.64	0	0.44	B1 / B-s2, d0
B99-50294	B	0.54	0.47	0	0.52	0.48	0	0.39	B1 / B-s2, d0

DESIGN	FACE			FABRIC				SUNFACTOR INSIDE	
				T _e	R _e	A _e	T _v	g-total _i	
B99-50299	B	0.54	0.47	0	0.49	0.51	0	0.40	B1 / B-s2, d0
B99-50300	B	0.54	0.47	0	0.39	0.61	0	0.43	B1 / B-s2, d0
B99-50348	B	0.54	0.47	0	0.69	0.31	0	0.34	B1 / B-s2, d0
B99-50354	B	0.54	0.47	0	0.25	0.75	0	0.48	B1 / B-s2, d0
B99-50358	B	0.54	0.47	0	0.45	0.55	0	0.41	B1 / B-s2, d0
B99	Back Alu A	0.54	0.47	0	0.29	0.71	0	0.46	B1 / B-s2, d0
B990-50360	A	0.65	0.53	0	0.69	0.31	0	0.34	B1 / B-s2, d0
	B			0	0.78	0.22	0	0.31	
B702-455	A	0.75	0.60	0	0.72	0.28	0	0.33	B1 / VKF 5.3 / B-s2, d0
	B			0	0.06	0.94	0	0.53	
SIRIUS									
40570-4934		0.18	0.38	0.14	0.46	0.40	0.07	0.42	-
40570-4935		0.18	0.38	0.02	0.26	0.72	0.01	0.48	-
40570-4962		0.18	0.38	0.14	0.42	0.44	0.01	0.43	-
40570-4963		0.18	0.38	0.15	0.58	0.27	0.08	0.38	-
40570-4978		0.18	0.38	0.04	0.17	0.79	0.01	0.51	-
40570-4981		0.18	0.38	0.16	0.47	0.37	0.03	0.42	-
40570-4984		0.18	0.38	0.15	0.45	0.40	0.01	0.42	-
40570-4985		0.18	0.38	0.14	0.44	0.42	0.02	0.43	-
40570-4988		0.18	0.38	0.18	0.51	0.31	0.05	0.41	-
40570-4989		0.18	0.38	0.01	0.11	0.88	0.01	0.53	-
40570-4992		0.18	0.38	0.11	0.43	0.46	0.07	0.43	-
40570-4993		0.18	0.38	0.02	0.17	0.81	0.01	0.51	-
40570-4994		0.18	0.38	0	0.05	0.95	0	0.55	-
40570-5000		0.18	0.38	0.01	0.07	0.92	0.01	0.54	-
40570-5005		0.18	0.38	0.02	0.16	0.82	0.01	0.52	-
40570-5032		0.18	0.38	0.14	0.44	0.42	0.01	0.43	-
40570-5033		0.18	0.38	0.13	0.39	0.48	0.02	0.44	-
40570-5723		0.18	0.38	0.19	0.65	0.16	0.12	0.36	-
40570-5724		0.18	0.38	0.19	0.65	0.16	0.08	0.36	-
40570-6797		0.18	0.38	0.19	0.65	0.16	0.08	0.36	-
40570-6838		0.18	0.38	0.23	0.65	0.12	0.16	0.36	-
40570-6840		0.18	0.38	0.08	0.65	0.27	0.05	0.36	-
40570-6862		0.18	0.38	0.12	0.65	0.23	0.06	0.36	-
40818-4898		0.22	0.35	0.17	0.76	0.07	0.15	0.33	M1 / B1
40818-5108		0.22	0.35	0.05	0.48	0.47	0.03	0.45	M1 / B1
40818-5770		0.22	0.35	0.11	0.34	0.55	0.04	0.51	M1 / B1
40821-4898	A	0.22	0.35	0	0.67	0.33	0	0.36	M1
40821-4899	A	0.22	0.35	0	0.67	0.33	0	0.36	M1
40821-5770	A	0.22	0.35	0	0.67	0.33	0	0.36	M1
12-121-1		0.27	0.49	0.36	0.58	0.06	0.23	0.42	M1 / B1
12-121-24		0.27	0.49	0.24	0.43	0.33	0.08	0.48	M1 / B1
12-121-25		0.27	0.49	0.17	0.34	0.49	0.02	0.51	M1 / B1
12-228-1		0.17	0.36	0.38	0.59	0.03	0.29	0.41	M1 / B1
12-228-3		0.17	0.36	0.22	0.34	0.44	0.06	0.52	M1 / B1
12-228-7		0.17	0.36	0.28	0.51	0.21	0.14	0.44	M1 / B1
12-228-9		0.17	0.36	0.26	0.46	0.28	0.10	0.46	M1 / B1
VEGA									
SV10-0101		0.34	0.42	0.15	0.19	0.66	0.11	0.51	M1 / B1 / B-s3, d0
SV10-0102		0.34	0.42	0.18	0.33	0.49	0.14	0.46	M1 / B1 / B-s3, d0
SV10-0110		0.34	0.42	0.16	0.24	0.60	0.12	0.49	M1 / B1 / B-s3, d0
SV10-0202		0.34	0.42	0.29	0.63	0.08	0.29	0.37	M1 / B1 / B-s3, d0
SV10-0207		0.34	0.42	0.25	0.53	0.22	0.23	0.40	M1 / B1 / B-s3, d0
SV10-0210		0.34	0.42	0.22	0.51	0.27	0.19	0.41	M1 / B1 / B-s3, d0
SV10-0220		0.34	0.42	0.29	0.58	0.13	0.26	0.39	M1 / B1 / B-s3, d0
SV10-0707		0.34	0.42	0.21	0.34	0.45	0.18	0.46	M1 / B1 / B-s3, d0
SV10-0720		0.34	0.42	0.25	0.42	0.33	0.22	0.43	M1 / B1 / B-s3, d0
SV10-2020		0.34	0.42	0.29	0.49	0.22	0.25	0.41	M1 / B1 / B-s3, d0

DESIGN	FACE			FABRIC				SUNFACTOR	
				T_e	R_e	A_e	T_v	INSIDE	
				T_e	R_e	A_e	T_v	g_{total_i}	
SV10-2022		0.34	0.42	0.31	0.48	0.21	0.28	0.42	M1 / B1 / B-s3, d0
SV10-3001		0.34	0.42	0.10	0.10	0.80	0.10	0.54	M1 / B1 / B-s3, d0
SV10-3006		0.34	0.42	0.10	0.06	0.84	0.09	0.54	M1 / B1 / B-s3, d0
SV10-3030		0.34	0.42	0.11	0.05	0.84	0.11	0.53	M1 / B1 / B-s3, d0
Satiné 5500 Low E		0.52	0.65	0.04	0.75	0.21	0.04	0.32	M1 / B1

All information relates to the sides exposed to the sun.

KEY

- T_e = transmission coefficient solar spectrum
- R_e = reflection coefficient solar spectrum
- A_e = Strahlungsabsorptionsfaktor
- T_v = transmission coefficient visible spectrum
- g_{total_i} = interior g-value - reference glazing C in accordance with EN 14501, $g = 0.59$, $U = 1.20$ [W/m²K]



Size



Fire resistance

M0-M1 / NFP 92-503

M1 / NFP 92-503

A2 / DIN 4102-1

B1 / DIN 4102-1

VKF 5.2 / SN 198898

VKF 5.3 / SN 198898

Euroclass A2-s1, d0 / EN 13501

Euroclass B-s1, d0 / EN 13501

Euroclass B-s2, d0 / EN 13501

Euroclass B-s3, d0 / EN 13501

GRIESSER

www.griessergroup.com

